

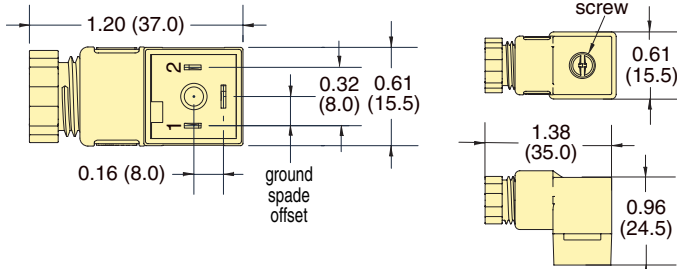


NEW! 15 MM VALVE ACCESSORIES

DIN Connectors

For Use with 15 mm Valves Only

DIN 43650 Form "C" connector with 8.0 mm spade center spacing is designed to connect to 15 mm DIN coils. This standard connector format allows for interchangeability across the industry. Also available with 6' or 12' PVC molded three-wire cord set.



Order No.	LED	Voltage	Cord
CC-C012		12 VDC	
CC-C012-P6		12 VDC	6'
CC-C012-P12		12 VDC	12'
CC-C024	✓	24 VDC	
CC-C024-P6	✓	24 VDC	6'
CC-C024-P12	✓	24 VDC	12'
CC-C24A	✓	24A VAC	
CC-C24A-P6	✓	24A VAC	6'
CC-C24A-P12	✓	24A VAC	12'
CC-C110	✓	110 VAC	
CC-C110-P6	✓	110 VAC	6'
CC-C110-P12	✓	110 VAC	12'
CC-C220	✓	220 VAC	
CC-C220-P6	✓	220 VAC	6'
CC-C220-P12	✓	220 VAC	12'



Connectors

Wire Connector must be ordered separately. Wire gauge AWG 24. Stranding 7/32.

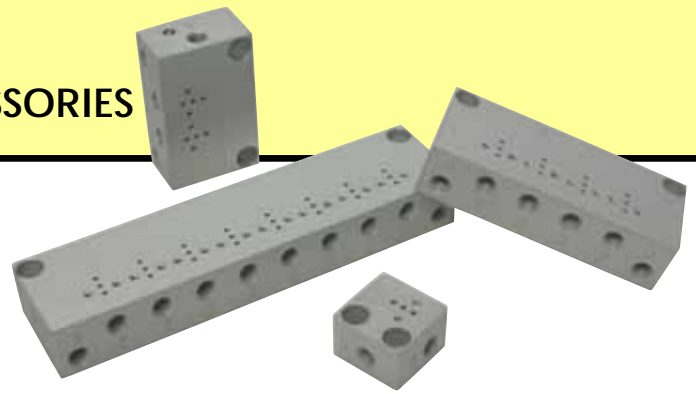
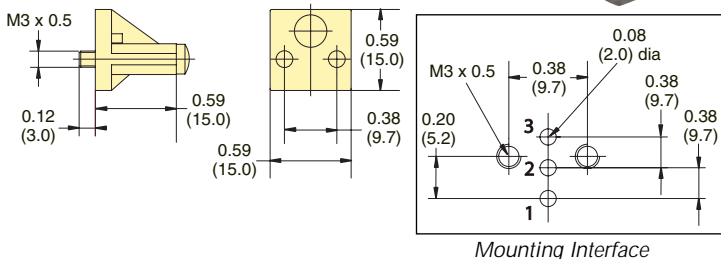
Order No.	Description
C2A-RB300	Connector with Cable, 11.8" (300 mm)
C2A-RB600	Connector with Cable, 23.62" (600 mm)
C2A-RB1000	Connector with Cable, 39.37" (1,000 mm)

Molex connector #050013-80000.

Cover Plate

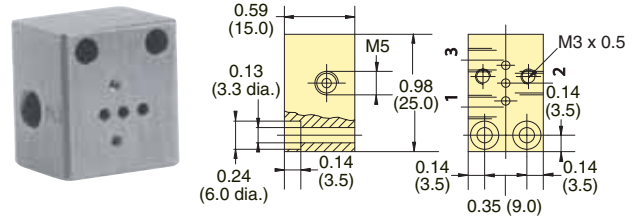
Manifold Cover Plate includes plate, gasket and two screws.

Order No.	Description
E15M-CP	15 mm Cover Plate (red)



Manifolds

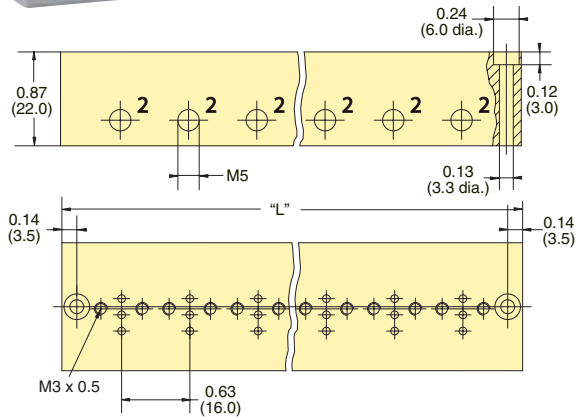
Manifolds are available for one to 12 valves, and are supplied with mounting screws and gaskets. Spare hardware and closing plates also available. Add -M5 for Metric ports.



Order No.	Description
E15M-01	Single Station Manifold



Multi-Station Manifolds



Stations	Order No.	"L" Dimension
2	E15M-02	1.73 (44.0)
4	E15M-04	2.99 (76.0)
6	E15M-06	4.25 (108.0)
8	E15M-08	5.51 (140.0)
10	E15M-10	6.77 (172.0)
12	E15M-12	8.03 (204.0)

Space Lug Connectors

Insulated crimp-on spade lug connectors are available for wiring up leads to connect electronic circuits to 15 mm terminal connectors. Accepts #22, #24, or #26 wire.



Order No.	Description
3831	Space Lug Connector